

Management of Venous Thromboembolism

Samuel Z. Goldhaber, MD
Associate Chief and Clinical Director
Division of Cardiovascular Medicine
Brigham and Women's Hospital
Professor of Medicine
Harvard Medical School

November 4, 2021



Disclosures

- Research Support:

- Bayer; BMS; Boston Scientific EKOS; Janssen; NHLBI

- Consultant:

- Agile; Bayer

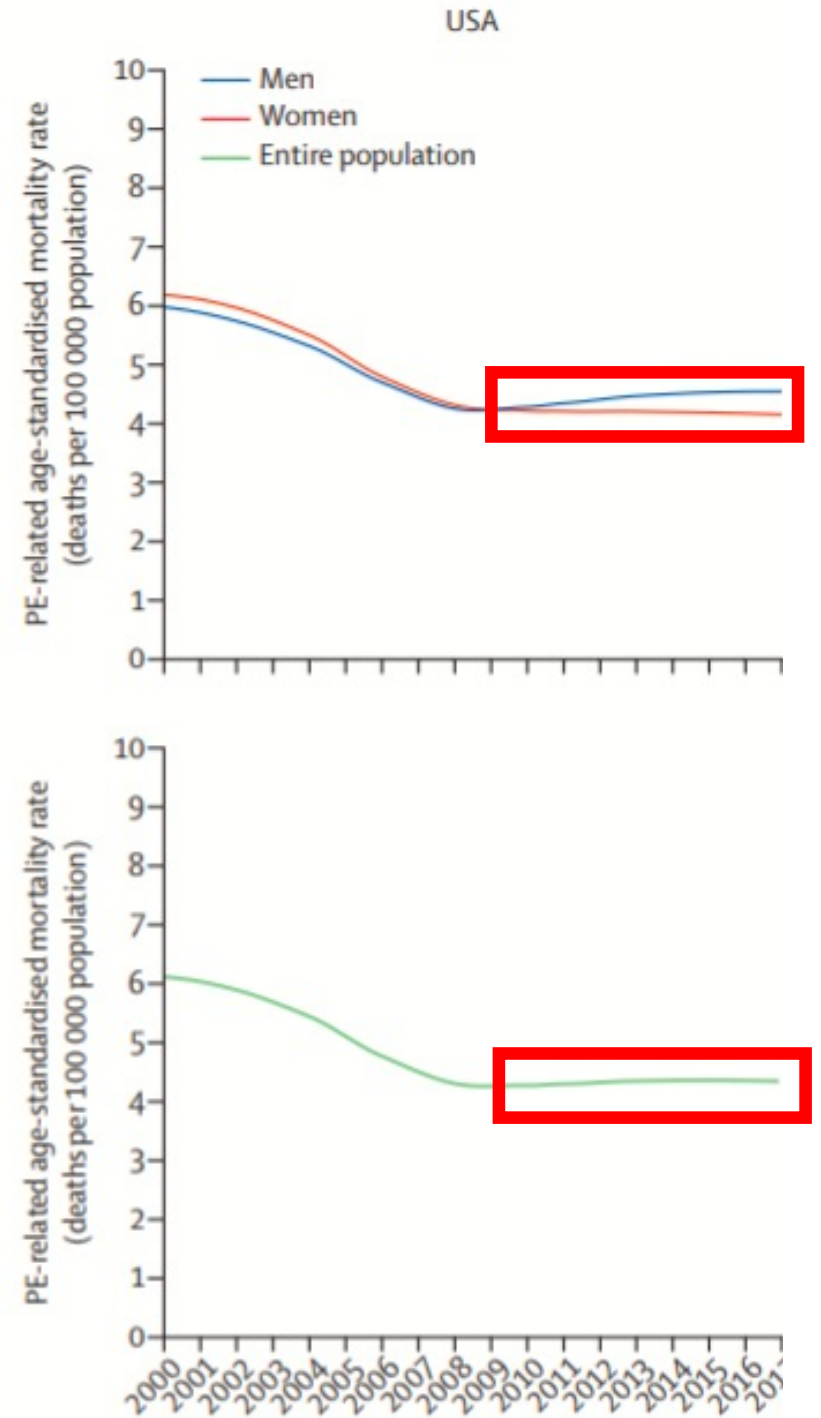
Key Learning Objectives

- Epidemiology—mortality rates, inequities
- COVID and VTE
- Bleeding with DOACs
- Cancer and VTE
- Optimal duration of anticoagulation
- Management beyond anticoagulation: catheter or surgical embolectomy

EPIDEMIOLOGY

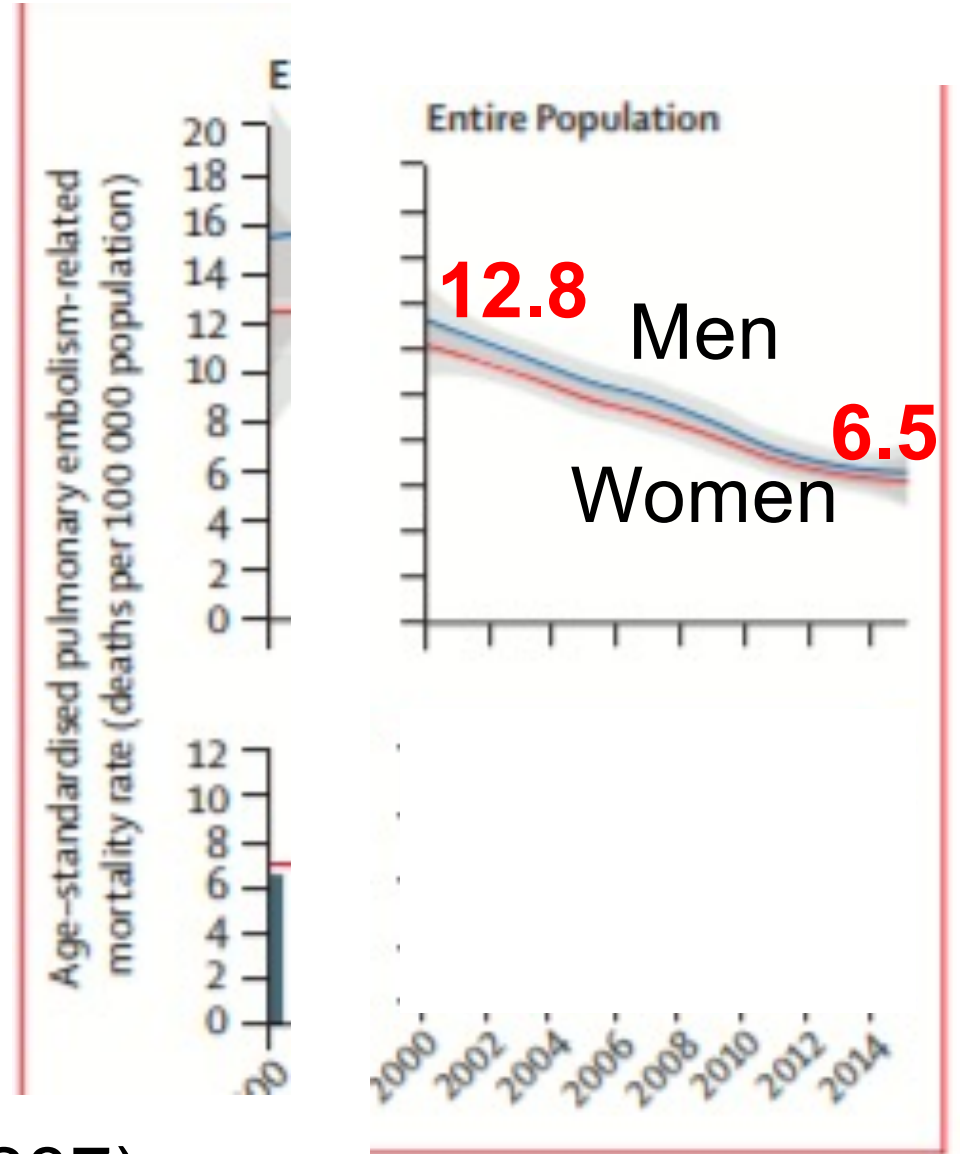
PE-Related Age-Adjusted Mortality in USA

(Barco S. Lancet Respir Med 2021; 9: 33-42)



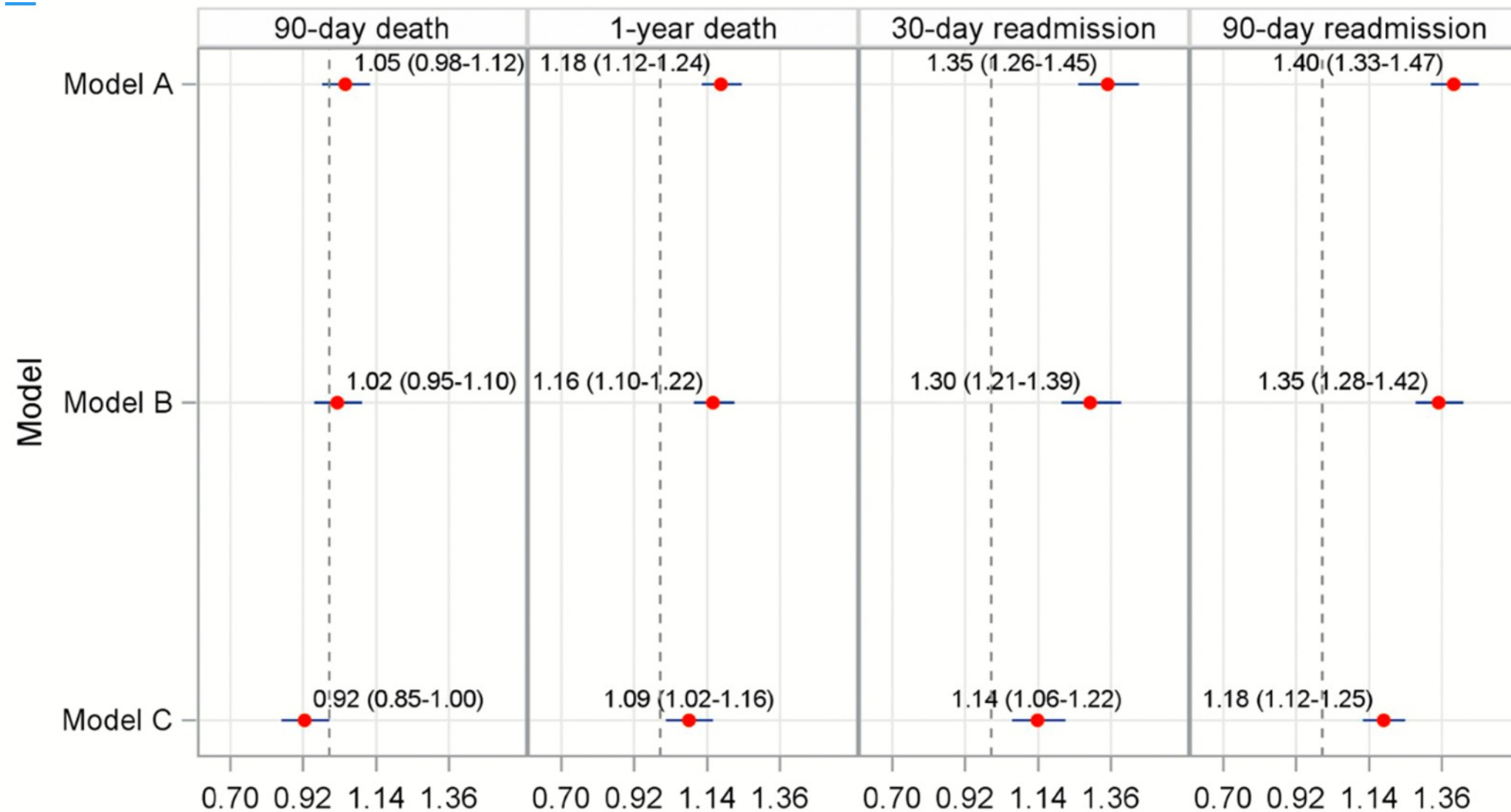
Trends in PE Mortality in Europe and Asia

A continuous decrease in PE mortality from 2000 to 2015



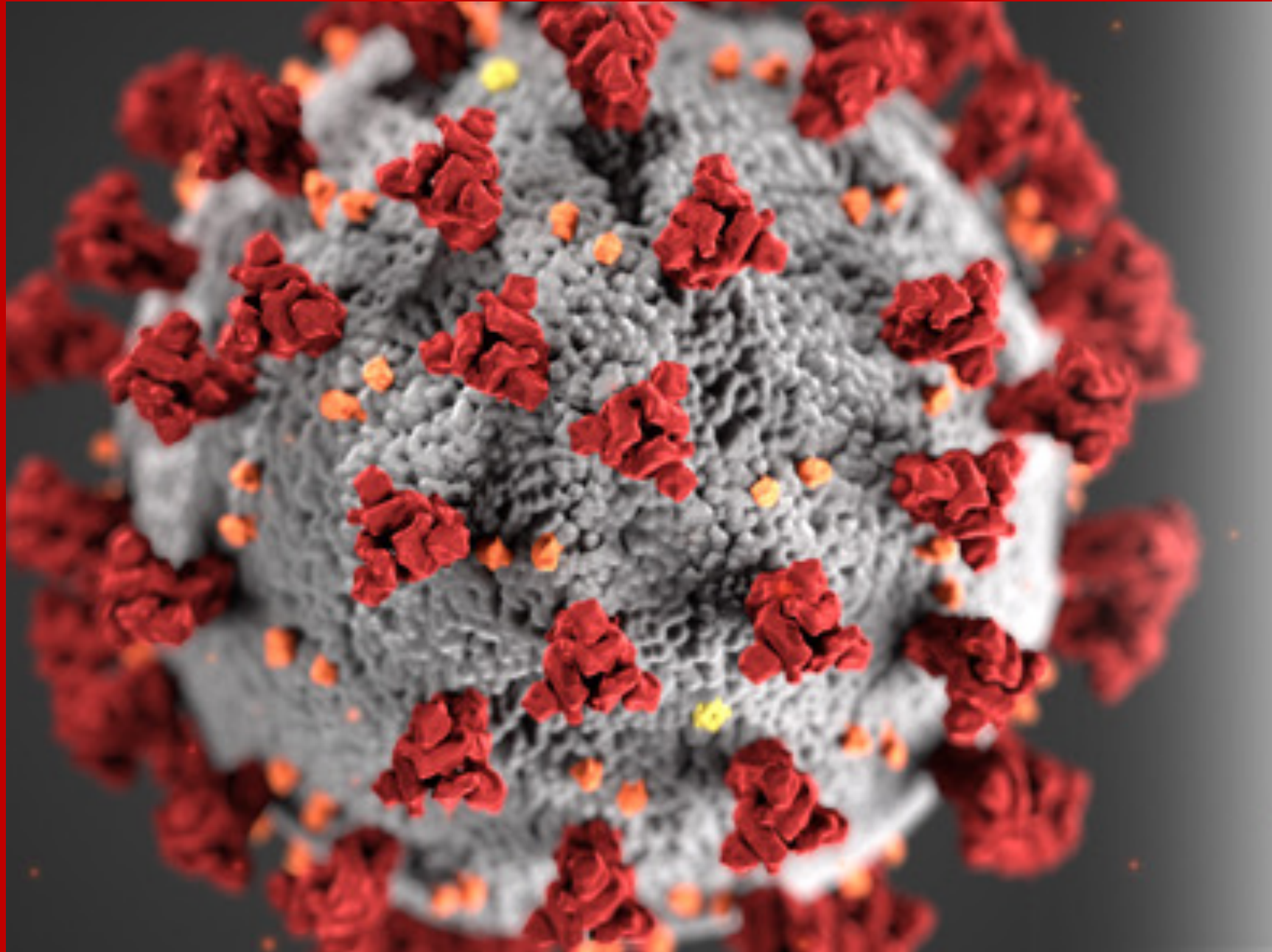
(Barco S. Lancet Respir Med 2020; 8: 277-287)

Mortality and Readmissions among Disadvantaged Older Adults



(Wadhera RK...Goldhaber SZ. JAHA 2021; July 2)

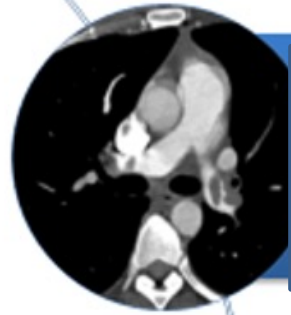
COVID-19 and VTE: A Perilous Combination



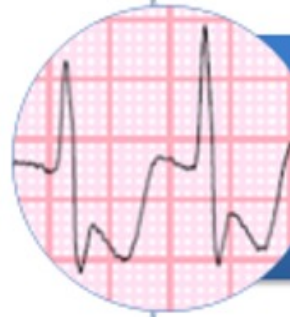
Post-Mortem Exam in COVID Patient: Right Ventricular Thrombus



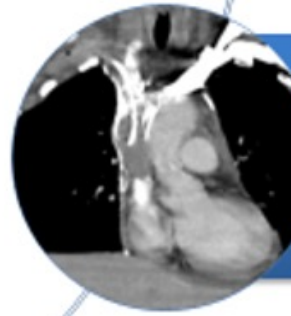
Corona-VTE Cohort (N=1,114): ICU Subset



ATE/ VTE: 36%



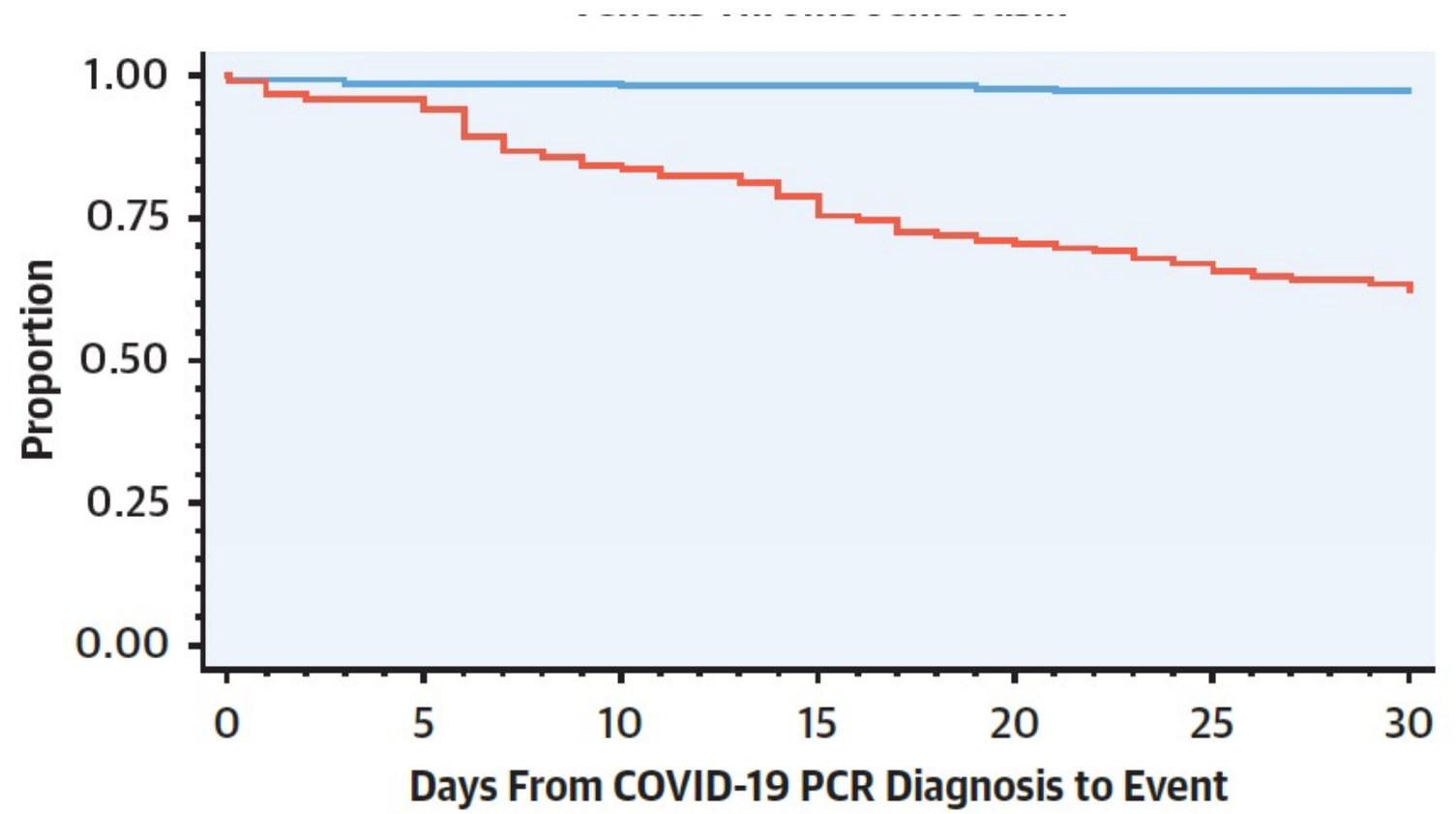
MACE: 47%



**Symptomatic VTE:
27%**

(Piazza G...Goldhaber SZ. JACC 2020; November 3)

Proportion without Major ATE or VTE

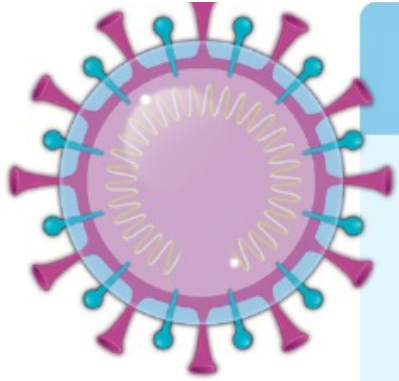


No. at Risk:

— Inpatient non-ICU	229	220	210	207	206	205	204
— ICU	169	160	131	120	103	95	86

(Piazza G...Goldhaber SZ. JACC 2020; November 3)

Hemostatic Abnormalities and Adverse Clinical Outcomes



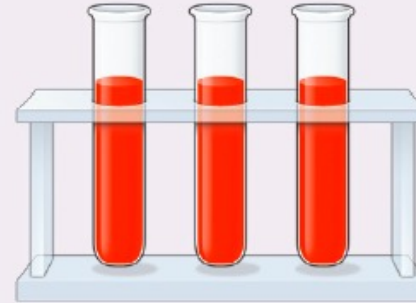
Sars-COV-2

Risk factors

- Acute illness
- Bed-ridden, stasis
- Genetics
- Fever
- Diarrhea
- Sepsis
- Liver injury
- CKD
- COPD
- HF
- Malignancy

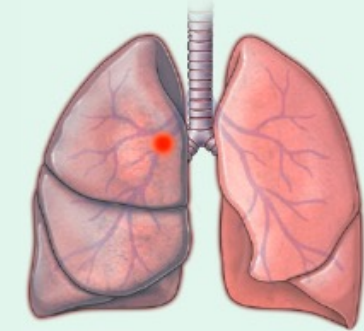
Hemostatic abnormalities

- Pulmonary microthrombi
- Intravascular coagulopathy
- Myocardial injury
- ↑ Cardiac biomarkers

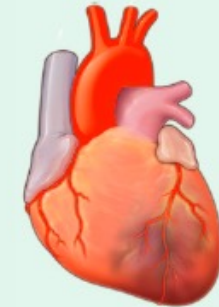


- ↑ D-dimer, FDPs, PT
- ↓ Platelets

Clinical outcomes



Venous thromboembolism



Myocardial infarction



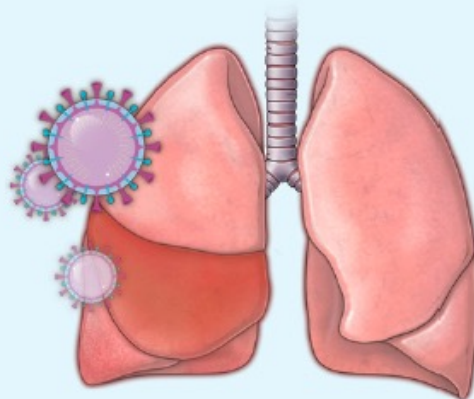
Disseminated intravascular coagulation

Inflammatory response → Endothelial dysfunction Superinfected

Tissue factor
↓ TFPI

Lymphopenia

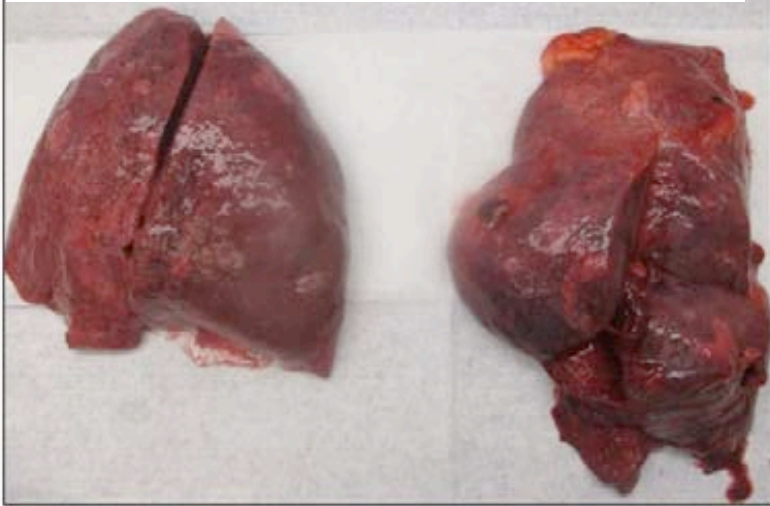
Inflammatory
cytokines
↑ IL-6, CRP



(Bikdeli B, et al. JACC 2020; 75: 2950-2973)

COVID Autopsy Findings

Bilateral pulmonary edema

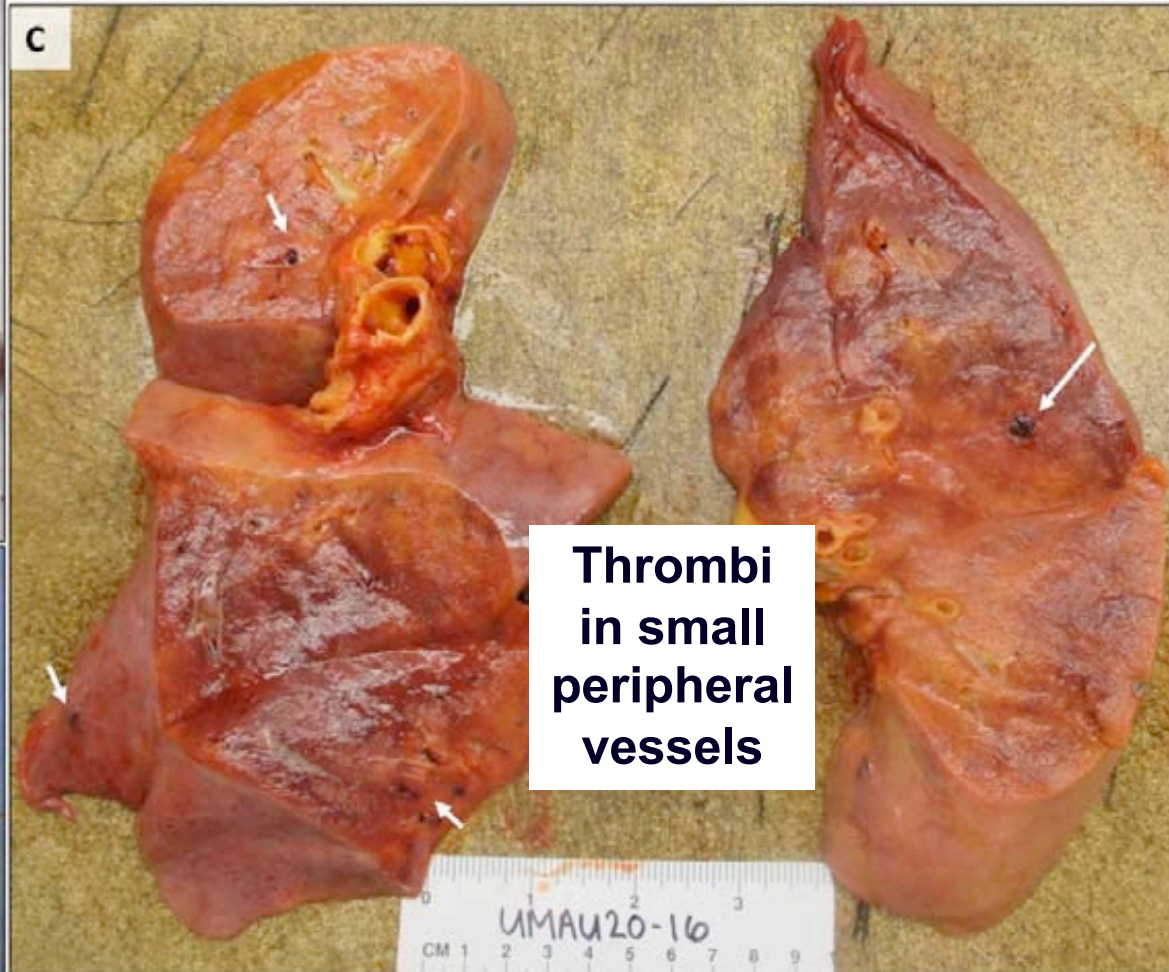


B



RV Dilatation

C



**Thrombi
in small
peripheral
vessels**

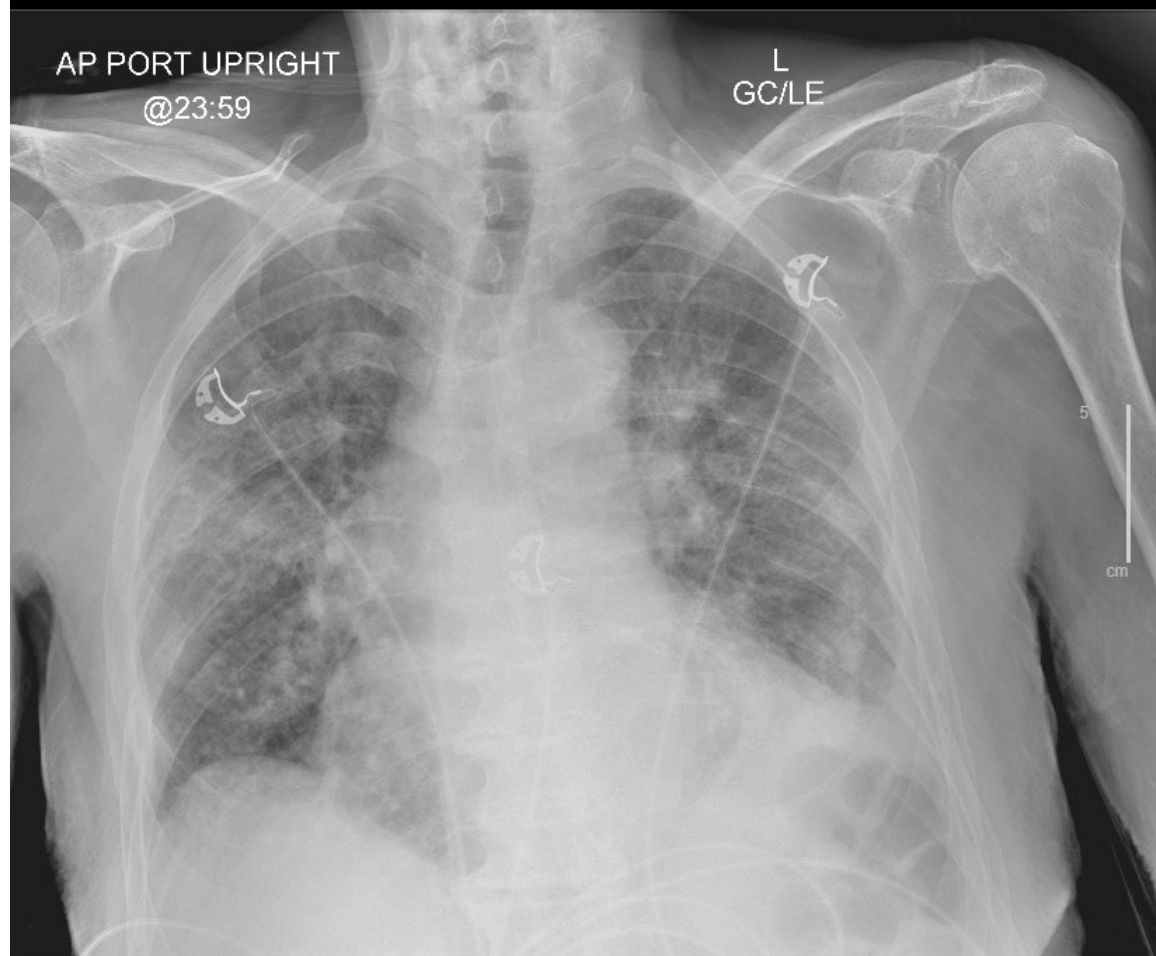
(Fox SE. Lancet Respir Med 2020; 8: 681-686)

Case #1: COVID in the ICU

- An 81 y.o. with COVID pneumonia:
- Admitted to ICU
- Requires 45 L/min oxygen + dopa 10 mcg/kg/min

Admission CXR

Se. 10001
Im: 1



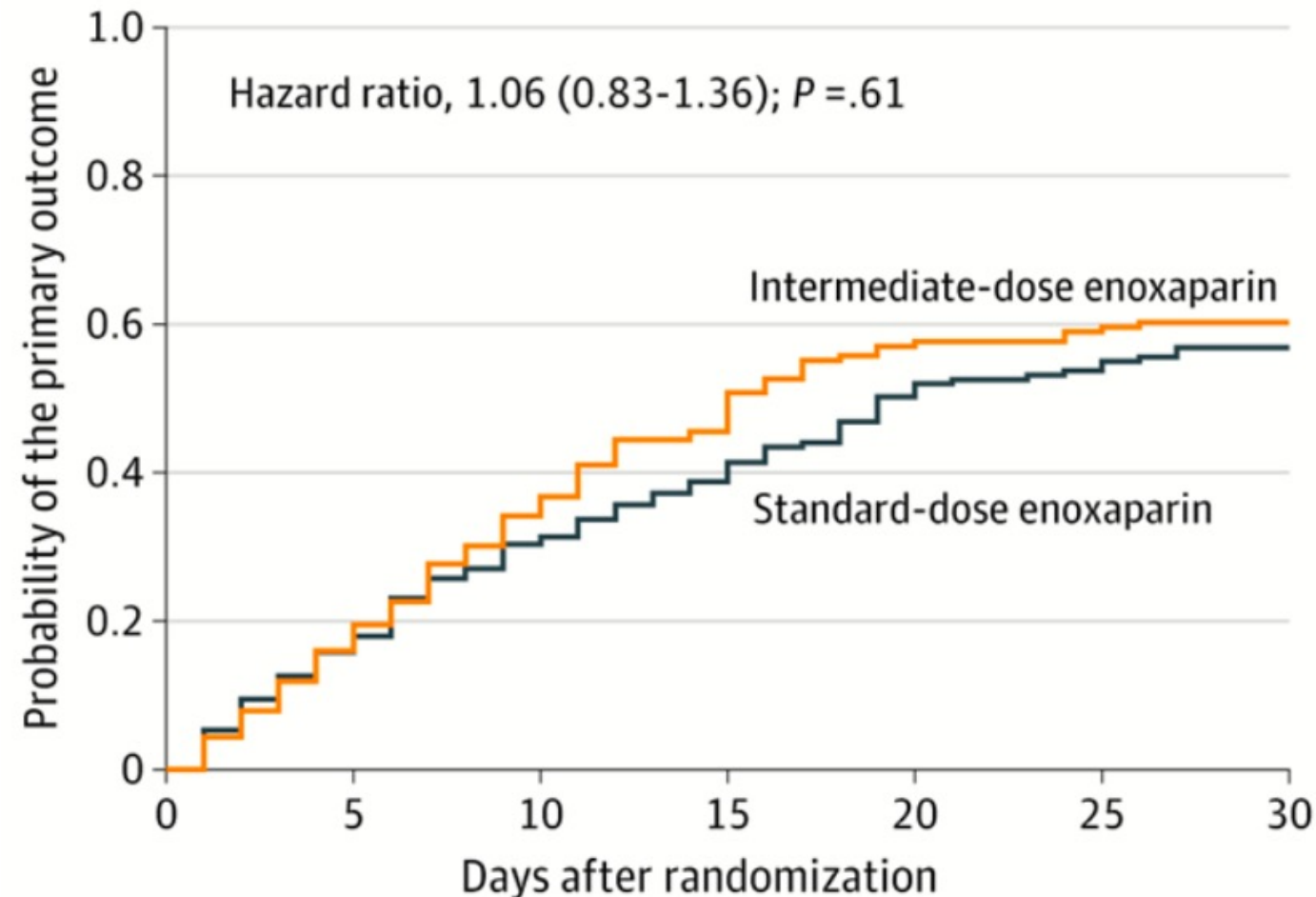
24 Hours Later

Se. 10001
Im: 1



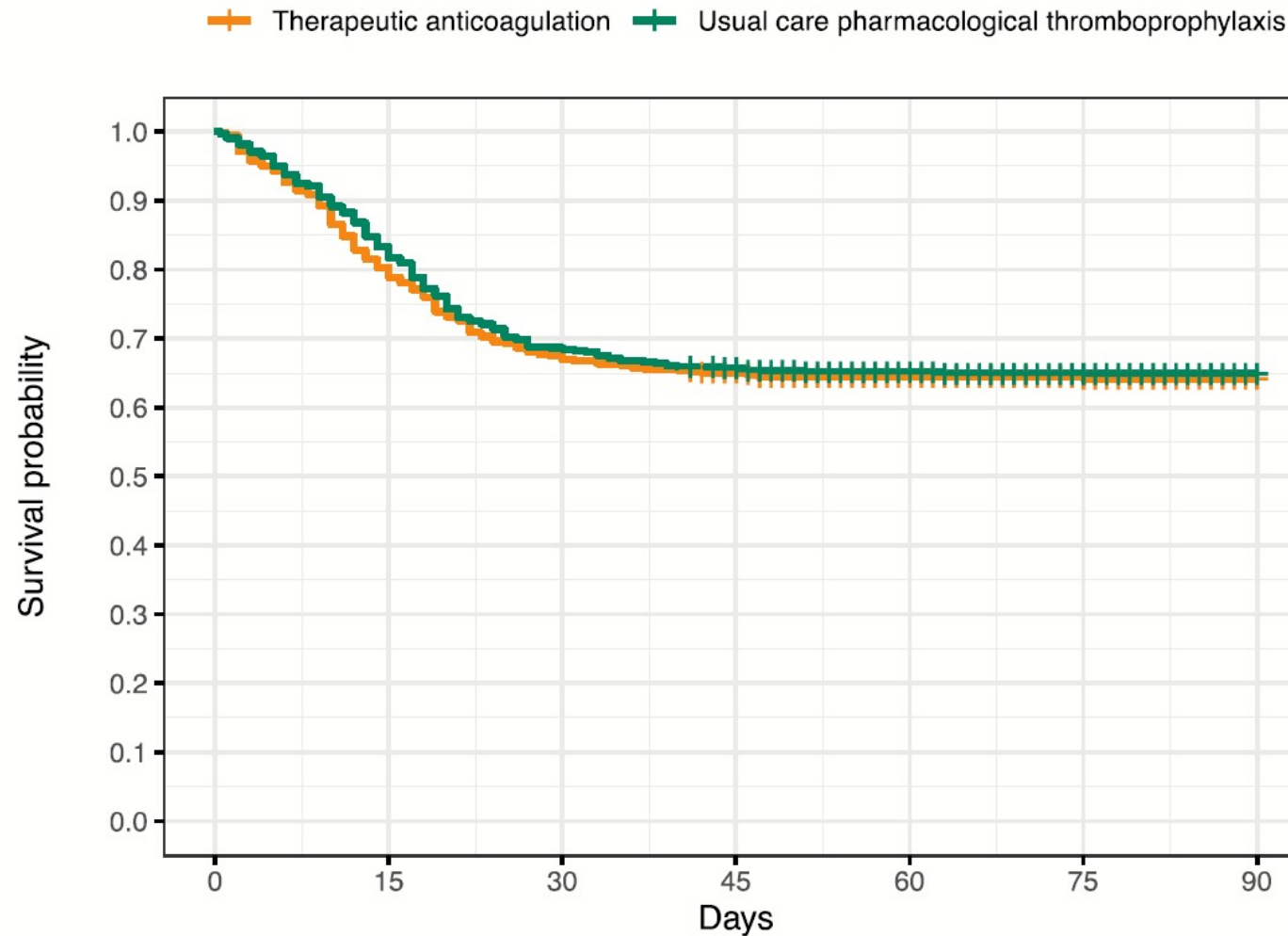
Intermediate (Half-Dose) vs. Prophylactic Dose Heparin To Prevent VTE:COVID ICU (N=562)

[Primary Endpoint: Arterial or venous thrombosis, ECMO, death]



(INSPIRATION Investigators. JAMA 2021; March 18)

Survival: Full Therapeutic Dose vs. VTE Prophylaxis Dose in COVID ICU Patients (N=1,074)



(REMAP-CAP, ACTIV-4a, ATTACC Investigators. NEJM 2021; 385: 777-789)

Full Therapeutic Dose vs. VTE Prophylaxis Dose in COVID Step-Down Unit Patients (N=2,219)

<u>Outcome</u>	<u>Full-Dose Heparin</u>	<u>Prophylactic-Dose Heparin</u>
Survival to Discharge	92.7%	91.8%
No Need for Organ Support	79.3%	75.4%
Major Thrombosis/ Death	8.0%	9.9%
Major Bleeding	1.9%	0.9%

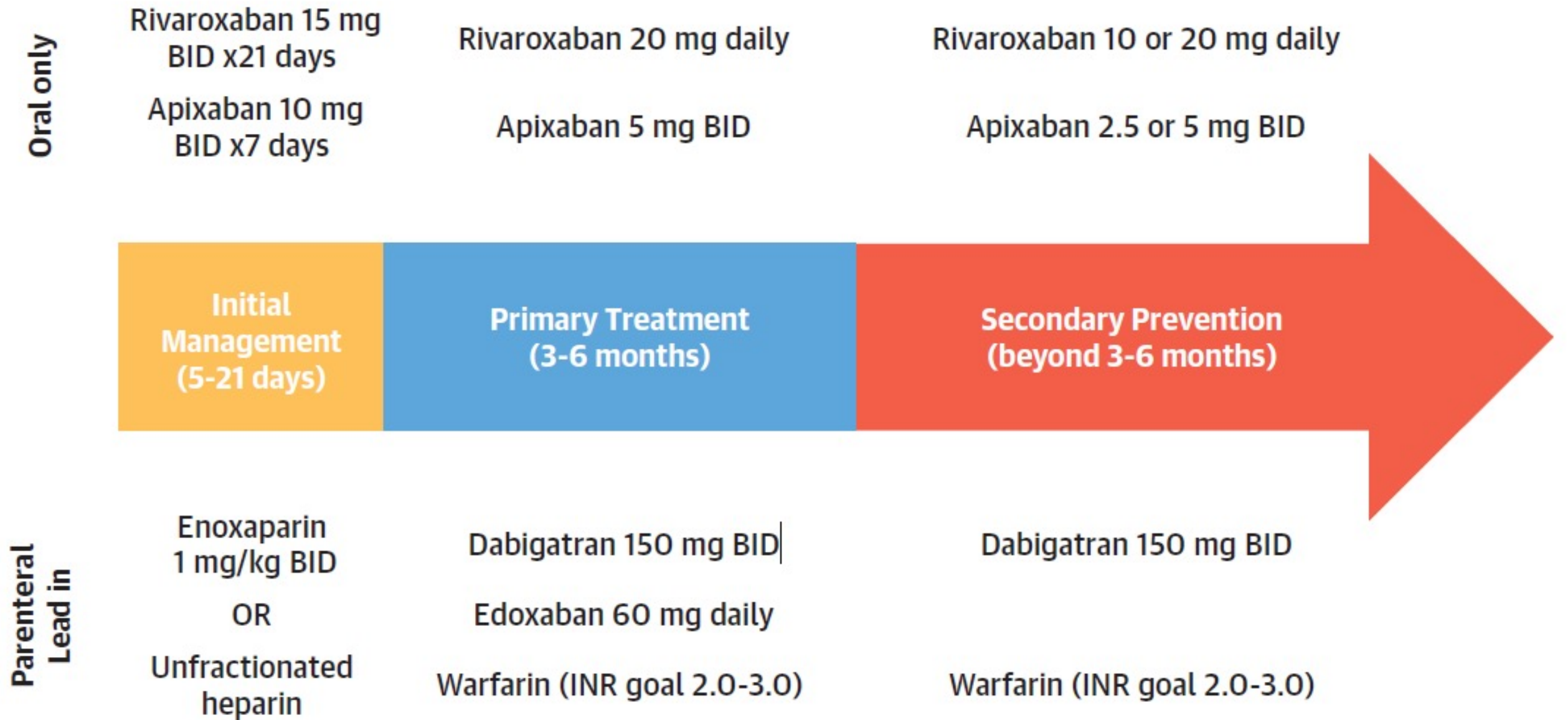
(REMAP-CAP, ACTIV-4a, ATTACC Investigators. NEJM 2021; 385: 790-802)

DOAC Paradigm To Treat

Pulmonary Embolism and DVT

**(Renner E, Barnes G. JACC 2020; 76:
2142-2154)**

FIGURE 1 Strategies for Anticoagulation Treatment by Phase of VTE



(JACC 2020; 76: 2142-2154)

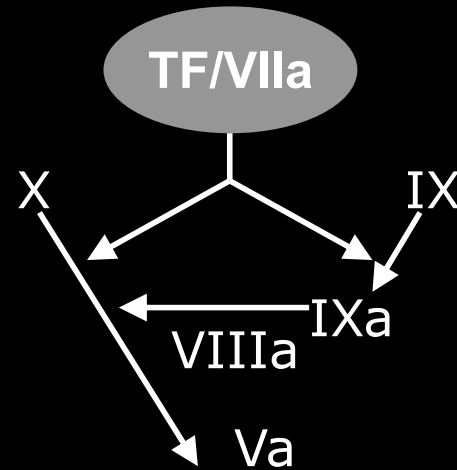
DOACS: Sites of Action

Steps in Coagulation

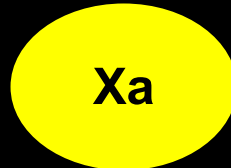
Coagulation Pathway

Drugs

Initiation

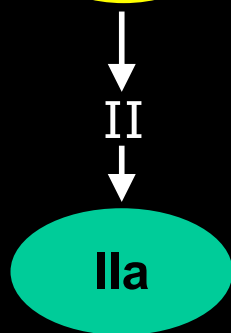


Propagation



Rivaroxaban
Apixaban
Edoxaban

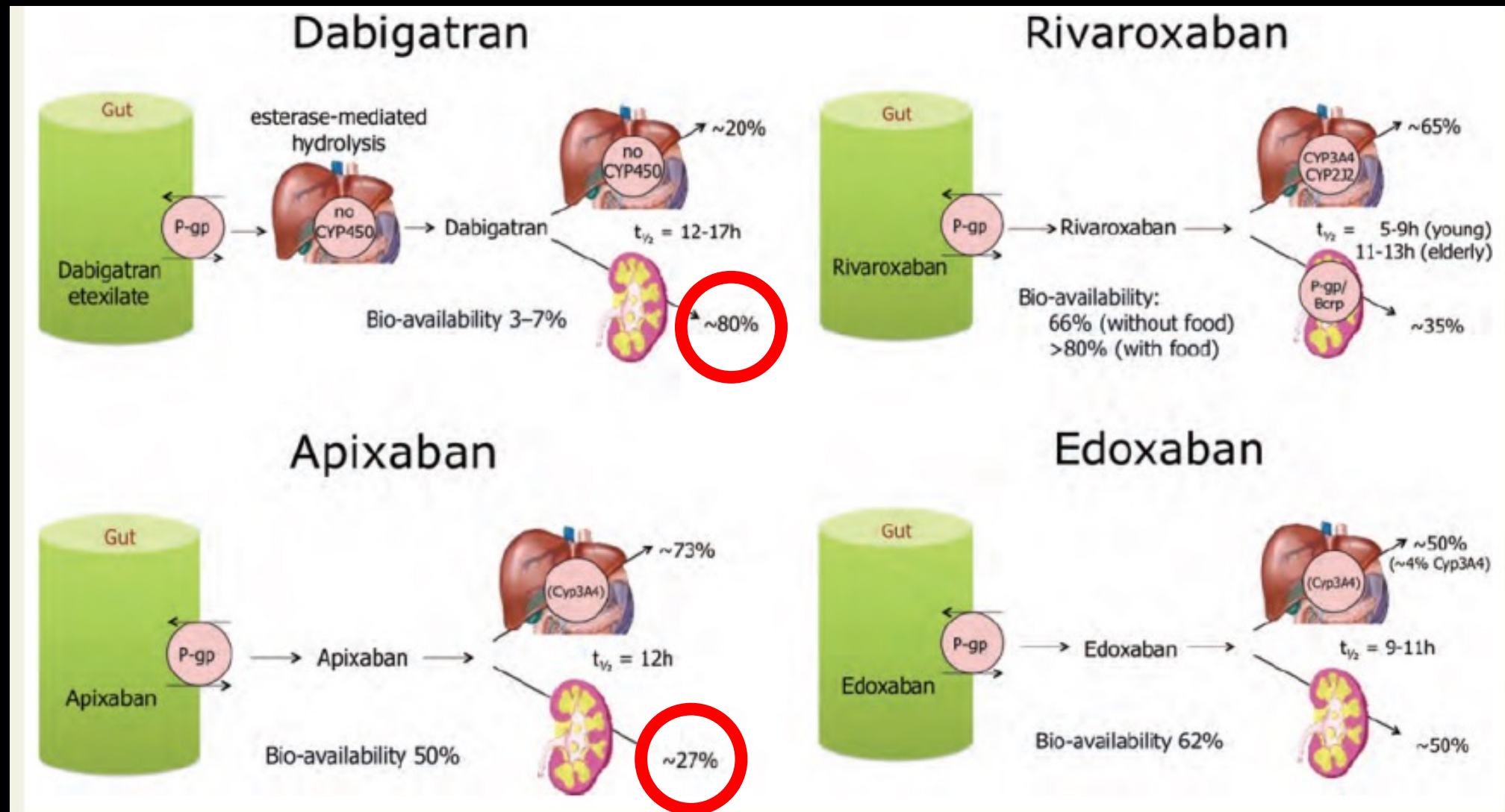
Fibrin formation



Dabigatran

(Circulation 2011;123:1436-1450)

DOACS Differ in Liver/ Kidney Metabolism



(Europace 2013; 15: 625-651)

Plasma DOAC Levels:

Apixaban and Rivaroxaban

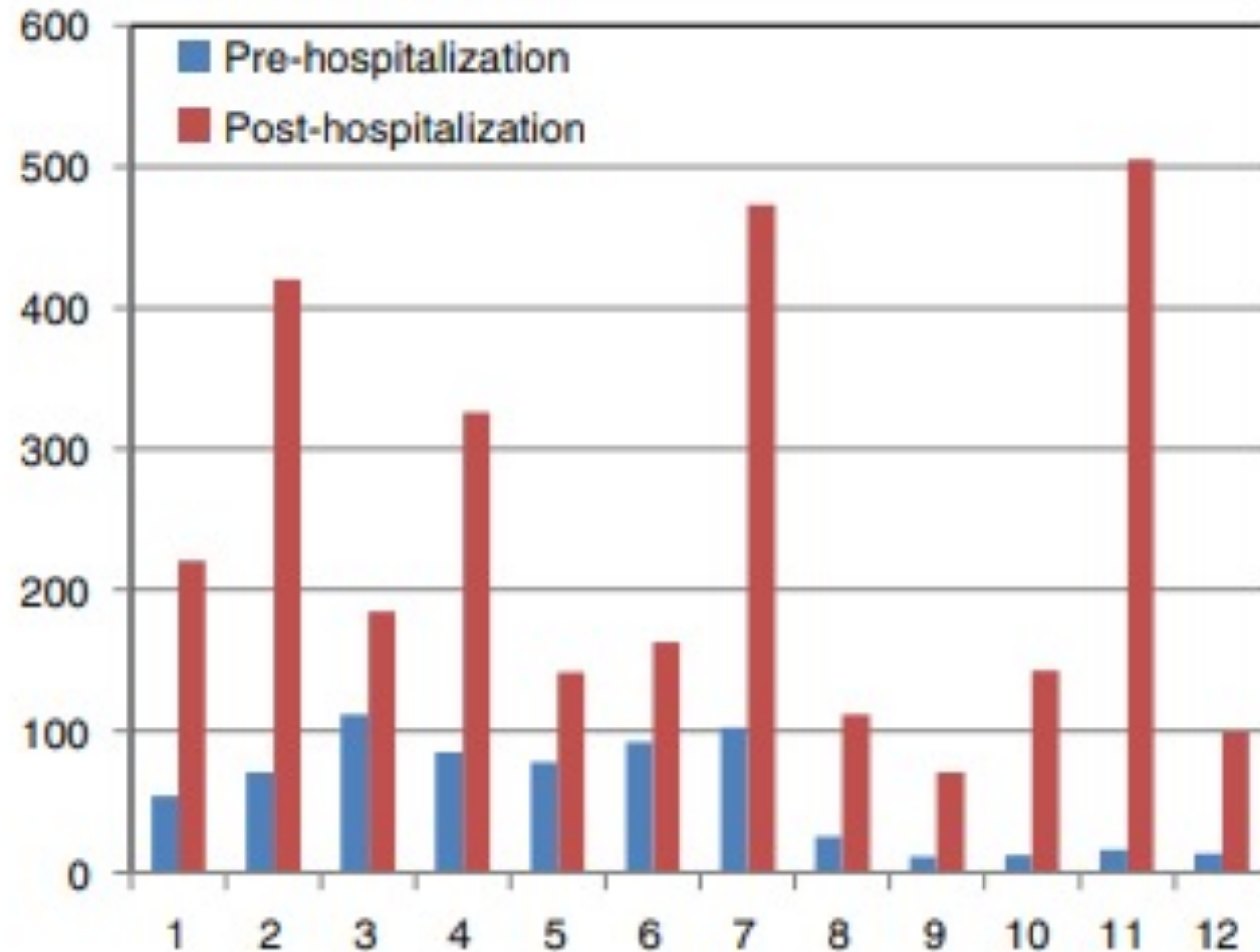
Plasma DOAC Levels Arrive at BWH

- **In September 2020**, the BWH Hematology laboratory began offering Apixaban and Rivaroxaban testing.
- Testing: available 24/7. Turn-around-time: 50 minutes.
- **Reportable Range:** 23 ng/mL – 500 ng/mL

Indications for Ordering DOAC Levels

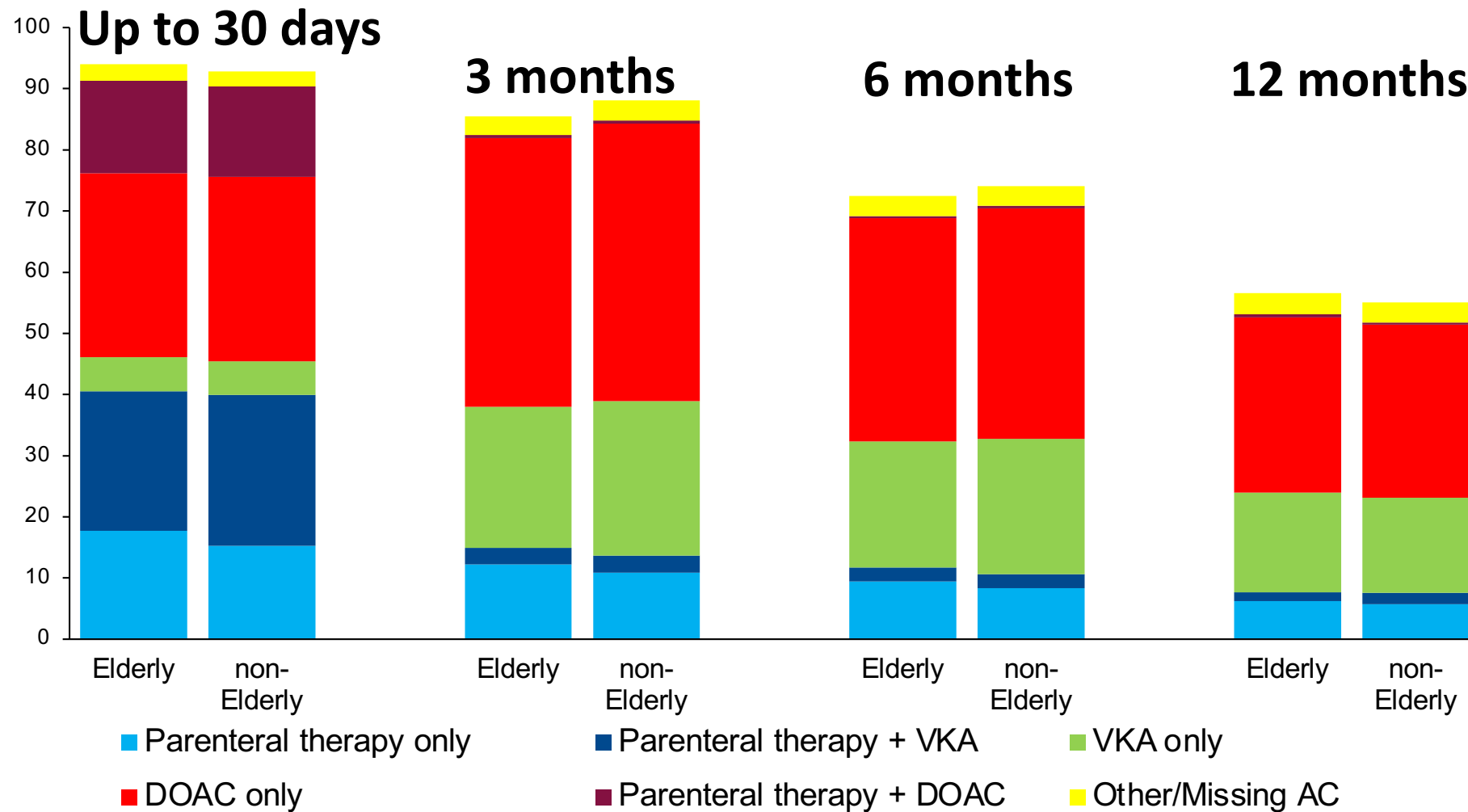
- Obesity or bariatric surgery
- Small, frail
- Unexpected clotting or bleeding
- Preop for emergency surgery
- CKD
- Disorder of GI absorption
- Concomitant meds affecting metabolism

DOAC Levels Skyrocket with Antiviral Therapy for COVID-19: Lopinavir, Ritonavir, Darunavir



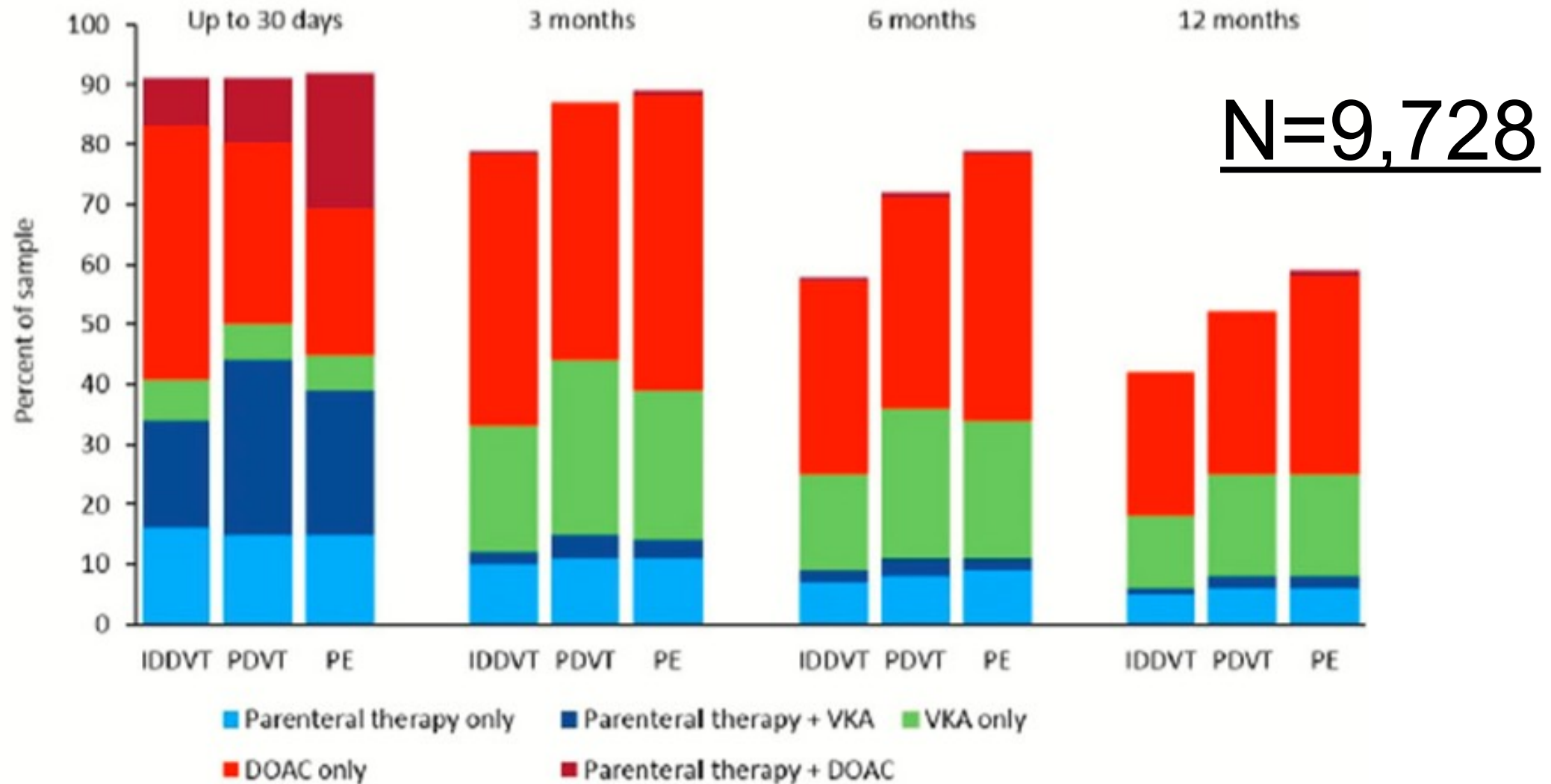
(Testa S, et al. J Thromb Haemost 2020; 18: 1320-1323)

VTE ANTICOAGULATION in Elderly: Long duration, No Agism



(GARFIELD-VTE 2019; unpublished)

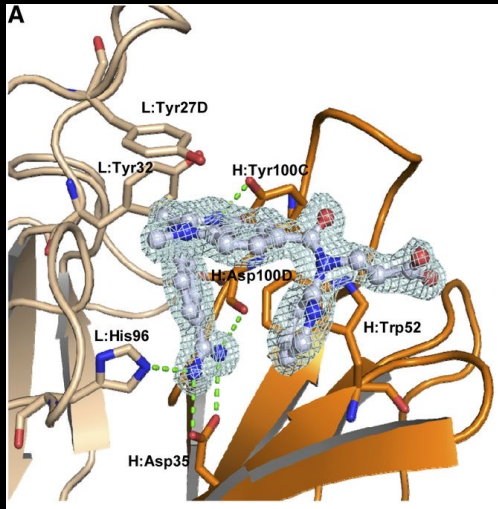
Anticoagulation of Idiopathic Distal DVT: GARFIELD-VTE



(Schellong SM, Goldhaber SZ, Weitz JI. Thromb Haemost 2019; 119: 1675-1685)

ANTIDOTES TO NOACS

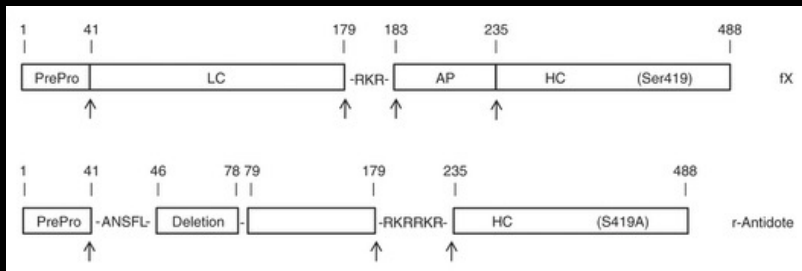
Idarucizumab



Target: Dabigatran

Structure: Humanized antibody fragment (FAb) to dabigatran; FDA approved in October 2015 (NEJM 2015; 373: 511-520)

Andexanet alpha



(NEJM 2015; 373: 2413-2424)

Target: FXa inhibitors

Structure: FXa lacking catalytic & binding activity; This decoy looks like FXa. Antidote for rivaroxaban, apixaban, edoxaban

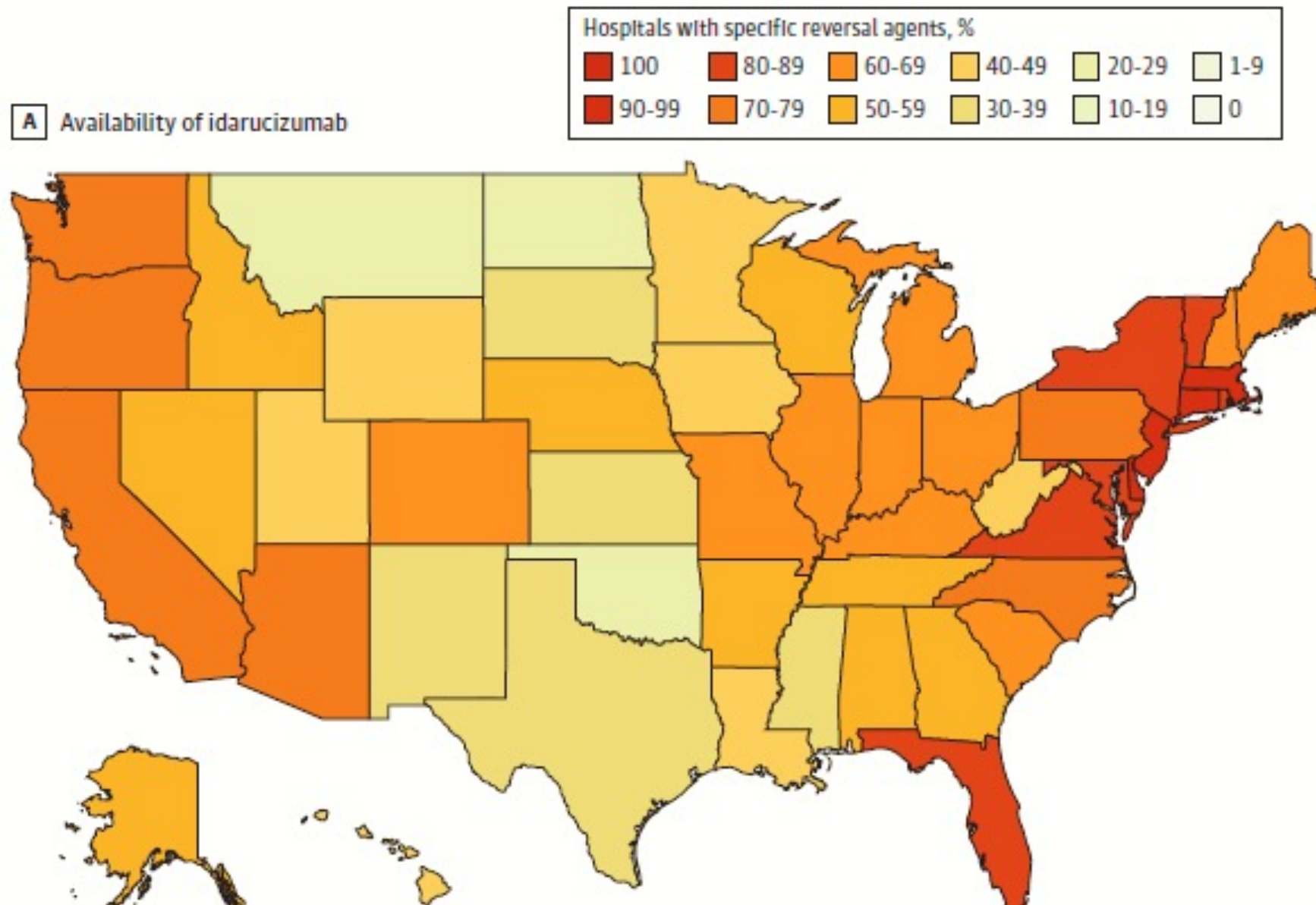
Hospitals with Idarucizumab and Andexanet

Table. Hospitals With Idarucizumab and Andexanet Alfa

Characteristic	Hospitals, No. (%)			
	Idarucizumab available		Andexanet alfa available	
	Yes	No	Yes	No
All hospitals (N = 4276)	2562 (59.9)	1714 (40.1)	499 (11.7)	3777 (88.3)
Hospital type				
Acute care (n = 2950)	2195 (74.4)	755 (25.6)	459 (15.6)	2491 (84.4)
Critical access (n = 1326)	367 (27.7)	959 (72.3)	40 (3.0)	1286 (97.0)
Trauma level status				
Not a trauma center (n = 3748)	2059 (54.9)	1689 (45.1)	348 (9.3)	3400 (90.7)
Trauma center				
Trauma level 1 or 2 (n = 528)	503 (95.3)	25 (4.7)	151 (28.6)	377 (71.4)
Trauma level 1 (n = 217)	204 (94.0)	13 (6.0)	79 (36.4)	138 (63.6)
Trauma level 2 (n = 311)	299 (96.1)	12 (3.9)	72 (23.2)	239 (76.8)

(Kanjee Z. JAMA Network Open 2021; May 14)

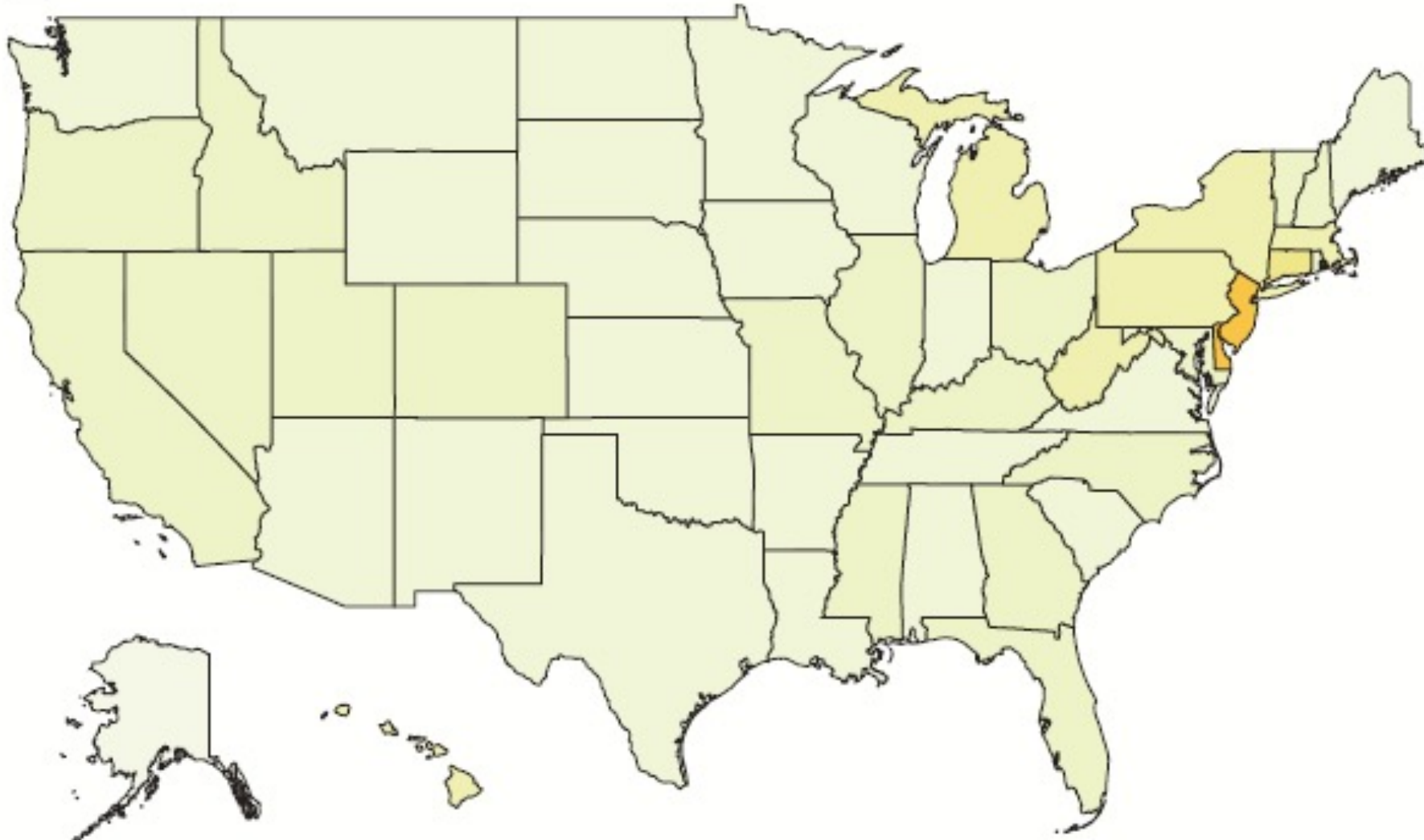
Idarucizumab Availability by State



(Kanje Z. JAMA Network Open 2021; May 14)

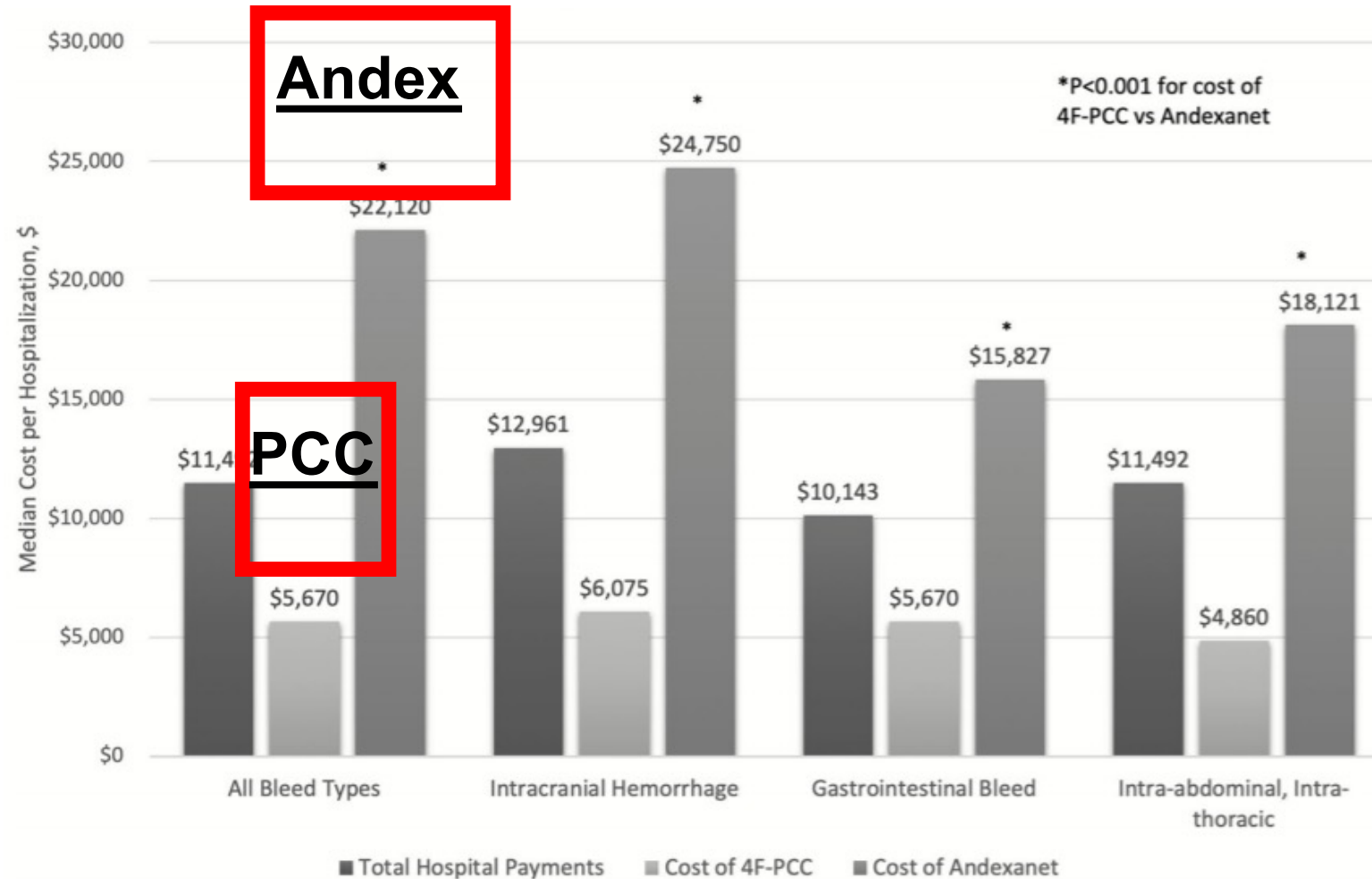
Andexanet Availability by State

B Availability of andexanet alfa



(Kanjee Z. JAMA Network Open 2021; May 14)

Cost of 4F-PCC versus Andexanet to Reverse Bleeding from DOACs



(Frontera A. JTT 2020; 49: 121-131)

CAN DOACS REPLACE

LMWH MONOTHERAPY

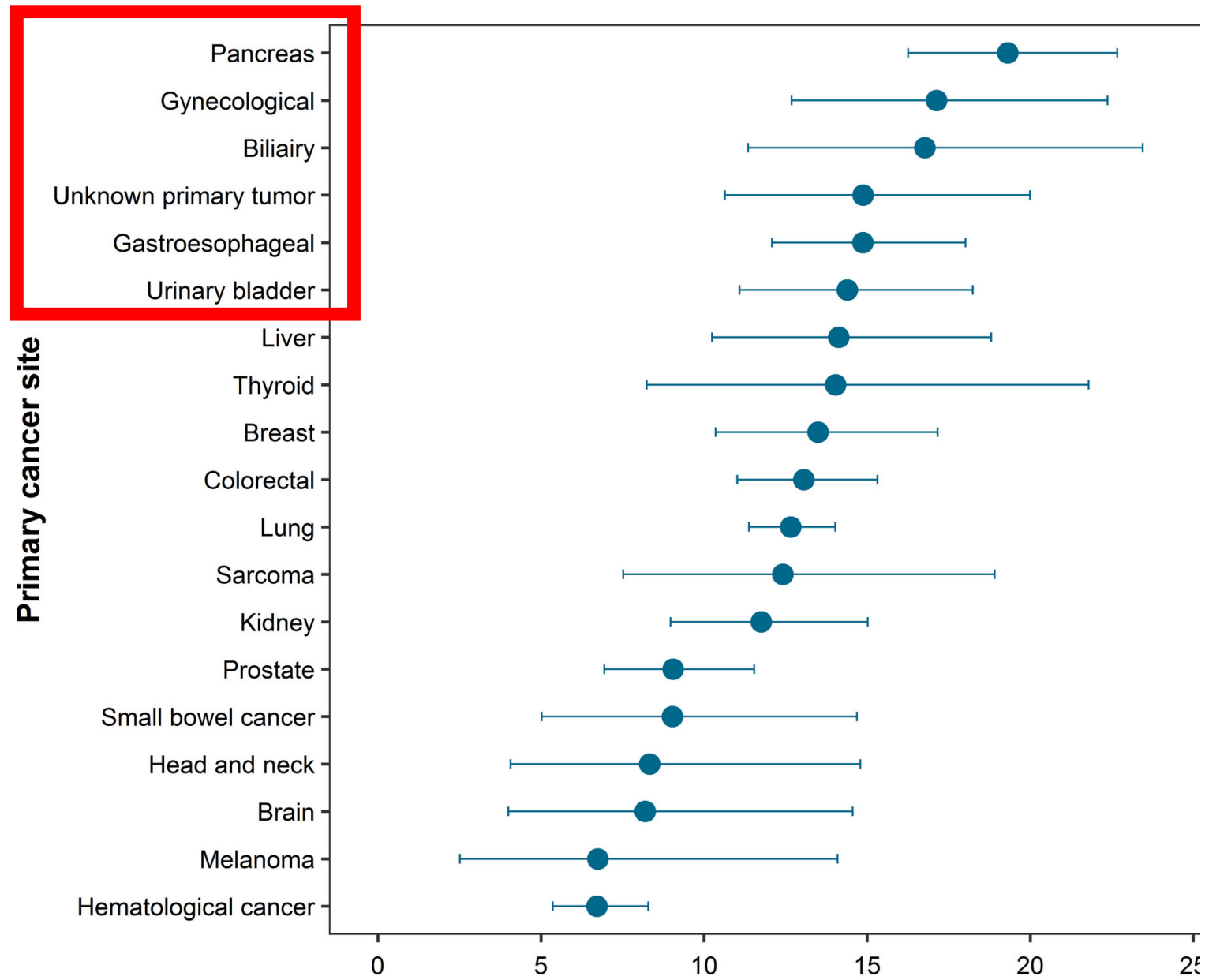
IN CANCER PATIENTS

WITH VTE?

CHALLENGES: ANTICOAGULATING CANCER PATIENTS WITH VTE

- Cancer is thrombogenic: High rates of recurrent thrombosis despite anticoagulation
- Cancer chemotherapy: thrombogenic/
thrombocytopenic
- Occult metastases are bleeding sources
- Interactions among anticoagulants and novel
chemotherapeutic agents—uncharted territory
- Frailty

Cancer Sites in PE Patients



(Gimbel IA. JTH 2021; 19: 1228-1235)

60 y.o. Man with Stage IV Bladder Cancer



**No Compression:
Dilated vein;
Echogenic mass**



CFA

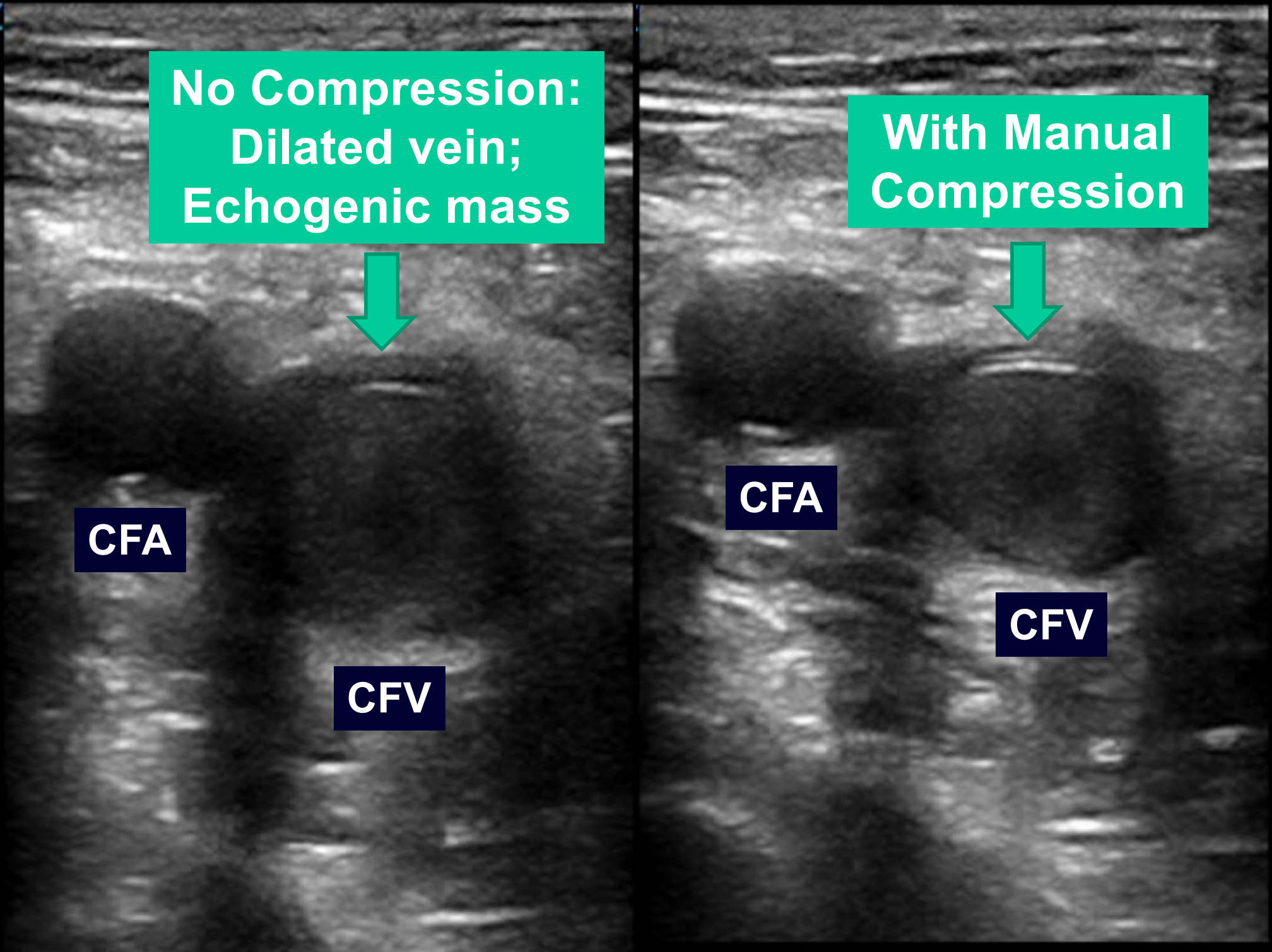
CFV

**With Manual
Compression**



CFA

CFV



CANCER / ACUTE VTE: DOAC vs. Dalteparin

<u>DOAC</u>	<u>Trial Result</u>
Edoxaban (Hokusai)	Better efficacy; Less GI safety; (NEJM 2018)
Rivaroxaban (SELECT-D)	Better efficacy; Less GI safety (J Clin Oncol 2018)
Apixaban* (Caravaggio)	Same efficacy; Same safety (NEJM 2020)

Optimal Duration of
Anticoagulation: Requiem for the
Concepts of “Provoked” and
“Unprovoked” VTE

2019 ESC PE Guidelines

“Terminology such as ‘provoked’ vs. ‘unprovoked’ PE/ VTE is no longer supported by the Guidelines, as it is potentially misleading and not helpful for decision-making regarding the duration of anticoagulation.”

(European Heart Journal 2020; 21: 543-603)

Duration of Anticoagulation

“Extended oral anticoagulation of indefinite duration should be considered for patients with a first episode of PE and:

- 1) No identifiable risk factor
- 2) A persistent risk factor (other than antiphospholipid syndrome)
- 3) A minor transient or reversible risk factor”

(European Heart Journal 2020; 21: 543-603)

2019 ESC PE Guidelines: Risk of Recurrent VTE

<u>Risk of Recurrence</u>	<u>Examples</u>
Low (<3%/ year)	Major surgery or major trauma
Intermediate (3% to 8%/ year)	Minor surgery
	Hospitalized with acute medical illness
	Pregnancy/ estrogens
	Long-haul flight
	Ulcerative colitis or Crohn's disease
	No identifiable risk factor (formerly called "unprovoked")
High (>8%/ year)	Active cancer
	Antiphospholipid syndrome

ADVANCED THERAPY

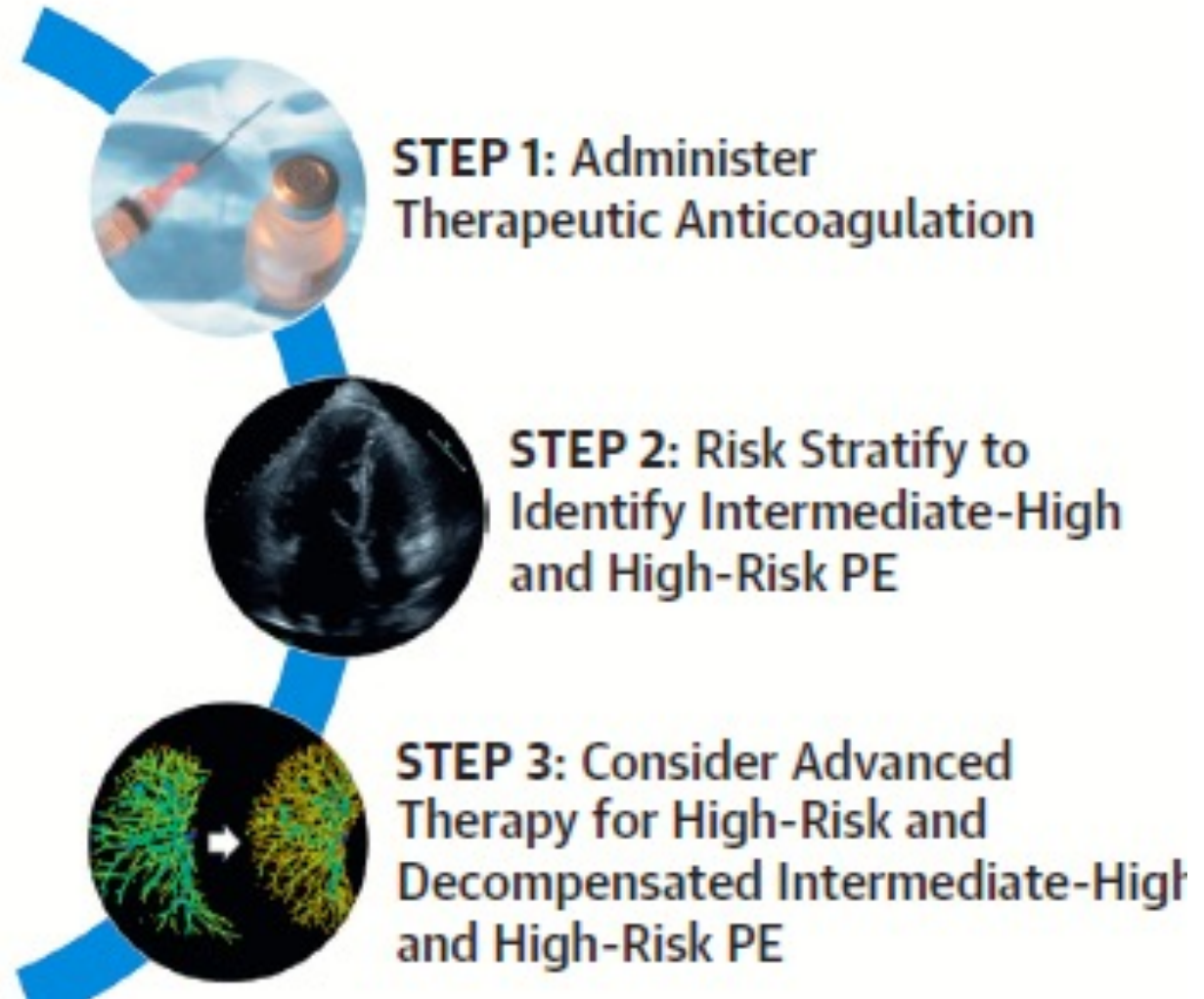
BEYOND

ANTICOAGULATION

Advanced Management: Intermediate and High-Risk PE



Pulmonary Embolism



(Piazza G. JACC 2021; 76: 2117-2127)

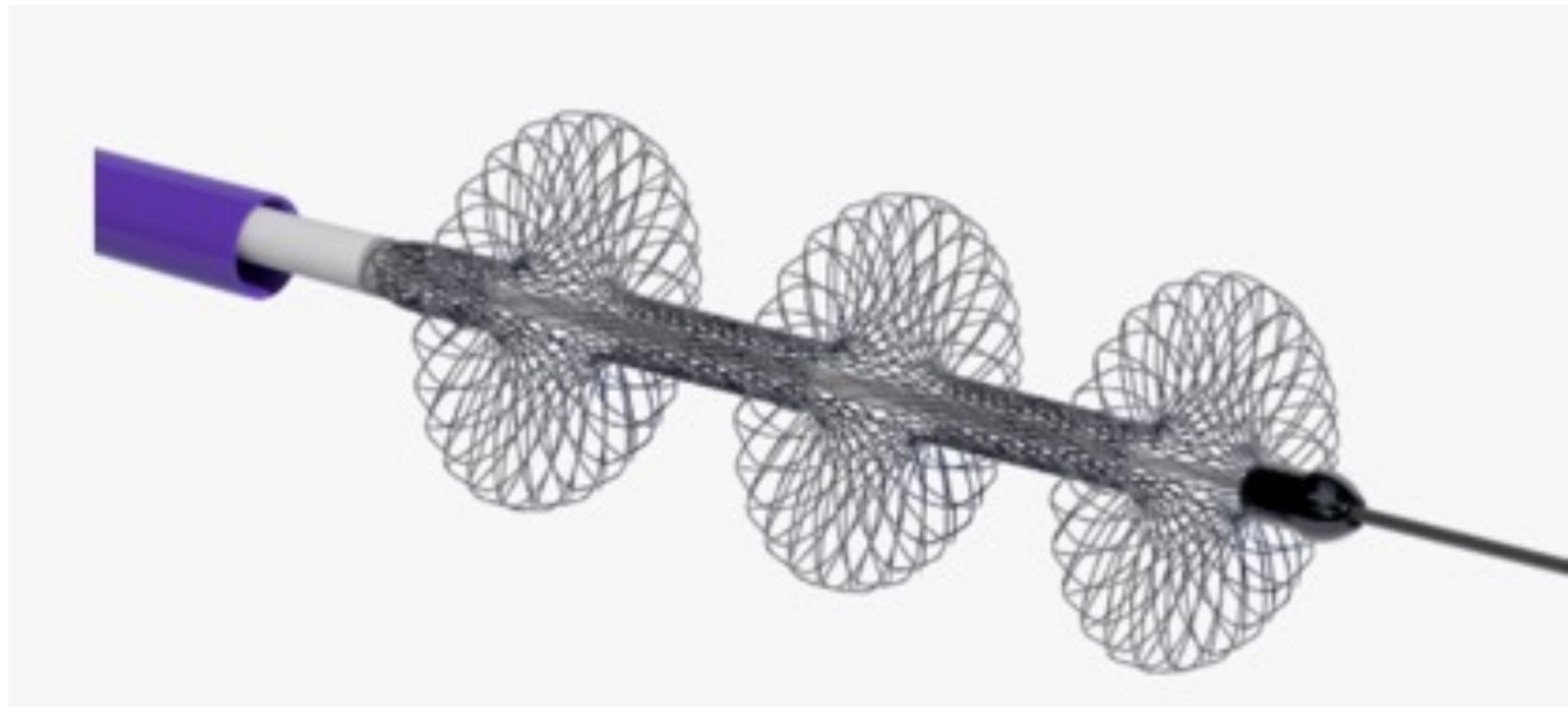
Options for Advanced Therapy in Acute PE

TABLE 1 Options for Advanced Therapy in Acute PE

Option	Indications	Advantages	Disadvantages
Systemic fibrinolysis	High- and intermediate-high-risk PE	<ul style="list-style-type: none"> • Rapid administration • Decreases mortality • Prevents hemodynamic collapse • Expedites RV recovery and symptom relief 	<ul style="list-style-type: none"> • 2%-5% risk of ICH
Catheter-directed therapy	High- and intermediate-high-risk PE	<ul style="list-style-type: none"> • Expedites RV recovery and symptom relief • Reduced risk of ICH • Option for mechanical embolectomy with some devices 	<ul style="list-style-type: none"> • Limited long-term and comparative data • May take time to mobilize
Surgical embolectomy	High- and intermediate-high-risk PE	<ul style="list-style-type: none"> • Expedites RV recovery and symptom relief • Reduced risk of ICH • Avoids need for fibrinolysis 	<ul style="list-style-type: none"> • Limited long-term and comparative data • May take time to mobilize • Limited to more centrally located PE
ECMO	Refractory cardiogenic shock	<ul style="list-style-type: none"> • Supports hemodynamics and oxygenation in patients with refractory shock or hypoxemia 	<ul style="list-style-type: none"> • Limited long-term and comparative data • May take time to mobilize

(Piazza G. JACC 2021; 76: 2117-2127)

FlowTrievers:
20F—No TPA



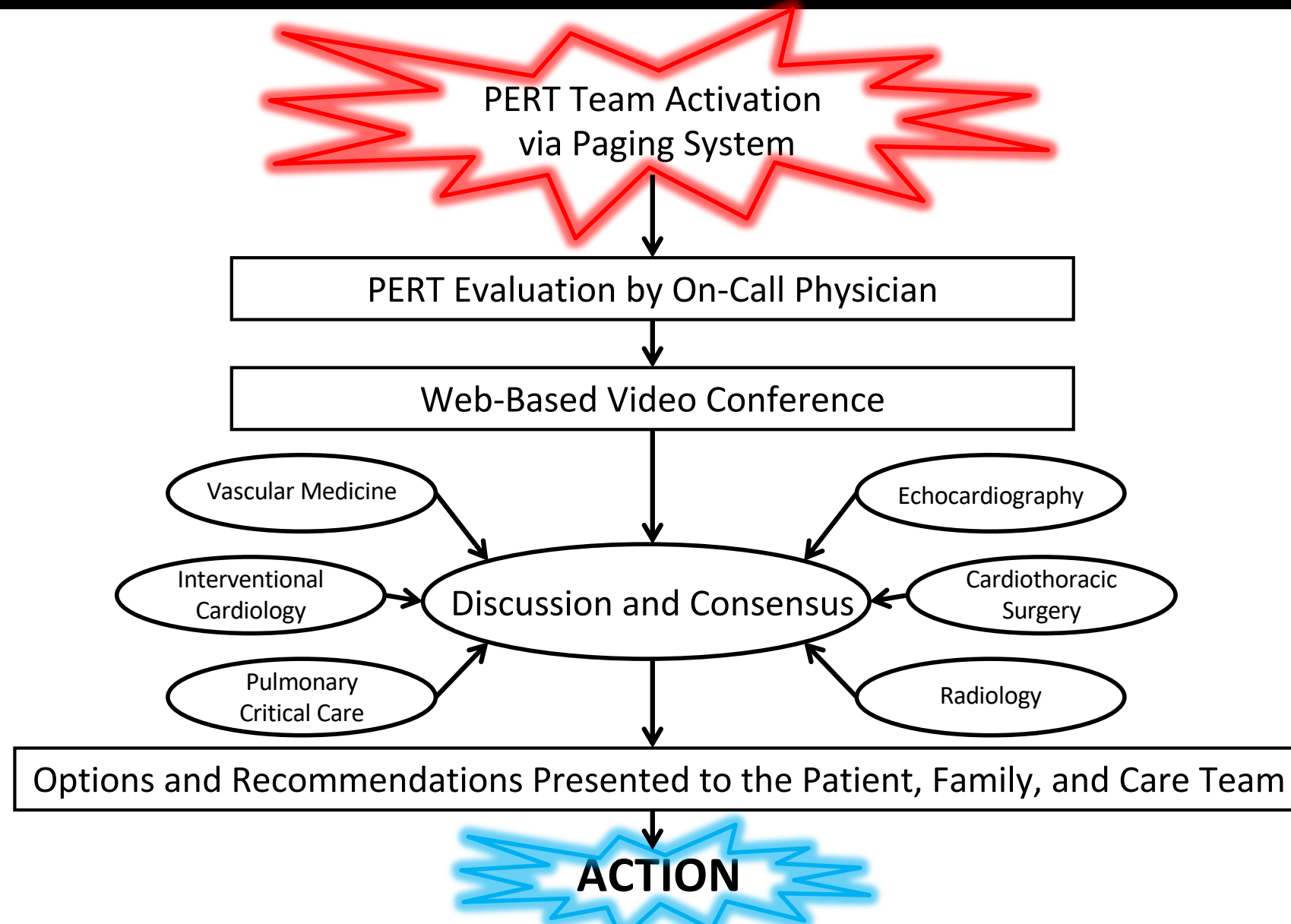
BWH FlowTriever Pulmonary Embolectomy #1—Drs. Bergmark and Shah



SURGICAL EMBOLECTOMY AT BWH: SURGEON'S CELL PHONE



PE RESPONSE TEAM (PERT)



(Dudzinski D, Piazza G. Circulation 2016; 133: 98-103)

Summary/ Take Home Points

1. COVID patients in ICU have high rates of VTE
2. Patients with cancer and VTE can often be treated safely and effectively with a DOAC rather than LMWH
3. Consider extended duration AC in most VTE patients rather than a fixed “stop date.”
4. Advanced therapy: thrombolysis, catheter or surgical embolectomy

References

- ESC Guidelines for acute pulmonary embolism. Eur Heart J 2020; 41: 543-603
- Piazza G. Registry of Thromboembolic Complications in patients with COVID-19. JACC 2020; 76: 2060-2072
- Chopard R. Lower Extremity VTE. JAMA 2020; 324: 1765-1776
- Goldhaber SZ. ECMO and Surgical Embolectomy. JACC 2020; 76: 912-915

Case #1: COVID in the ICU

- An 81 y.o. with COVID pneumonia: Admitted to ICU
- Requires 45 L/min oxygen + dopa 10 mcg/kg/min
- To prevent VTE, you order:
 - A) Compression stockings, pneumatic compression
 - B) Prophylactic dose heparin or LMWH
 - C) Intermediate dose heparin
 - D) Full dose heparin

Case #1: COVID in the ICU

- An 81 y.o. with COVID pneumonia: Admitted to ICU
- Requires 45 L/min oxygen + dopa 10 mcg/kg/min
- To prevent VTE, you order:
 - A) Compression stockings, pneumatic compression
 - B) Prophylactic dose heparin or LMWH**
 - C) Intermediate dose heparin
 - D) Full dose heparin